

Asset Finder

Comfortable Querying in Smallworld GIS

OVERVIEW

Benefits

- Fast and simple search/query of resource data
- Intuitive handling
- Ideal for sporadic GIS users
- Higher acceptance, in particular for simple query applications
- Flexible and user-friendly configuration

System requirements

Smallworld GIS, Version 4

Asset Finder allows quick and easy data queries in Smallworld GIS. It has been designed for trained and untrained GIS users who only occasionally request asset information.

The desired queries can be configured by the administrator and may contain any possible object or attribute name as a synonym for the applied GIS name.

Both the use of common language and the easy application are combined in a comfortable user interface. The user chooses attributes from a list and enters the query conditions. The results analysis of Asset Finder is of high performance and offers many user-friendly processing functions like filtering, grouping or displaying data as well as the export of the results to the Smallworld Explorer or the display in the graphical map.

Allowing easy asset queries, Asset Finder is the ideal add-on for query clients and for mobile GIS clients.

With the Asset Finder you can quickly answer questions like:

- Which substations contain circuit breakers of a certain kind?
- For which cable sections of a certain year of construction have certain types of wires been used?
- Which gas or water mains consist of a defined material and are of a certain age?

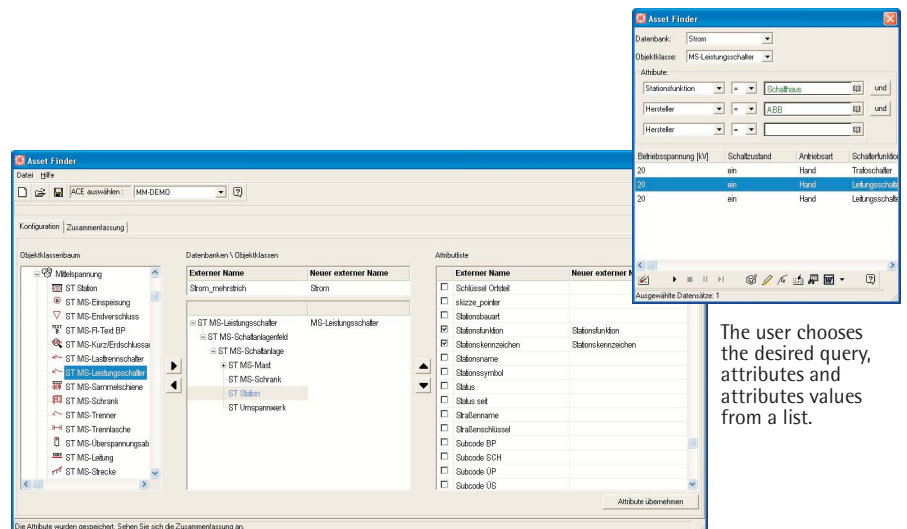


Authorized Partner
GE Energy

Smallworld Solutions by Mettenmeier

As an Authorized Partner of GE Energy, Mettenmeier has been developing Smallworld GIS applications for over 15 years. Every day, thousands of GIS users profit from enhanced functionality and mature solutions delivered by Mettenmeier.

Mettenmeier GmbH Utility Solutions
Klingenderstr. 10-14
33100 Paderborn, Germany
Tel. +49 (0)5251 150-470
Fax +49 (0)5251 150-499
mettenmeier@mettenmeier.de
www.mettenmeier.com



The user chooses the desired query, attributes and attributes values from a list.

The user-friendly administration component allows pre-configuration of queries and the displayed object and attribute names.