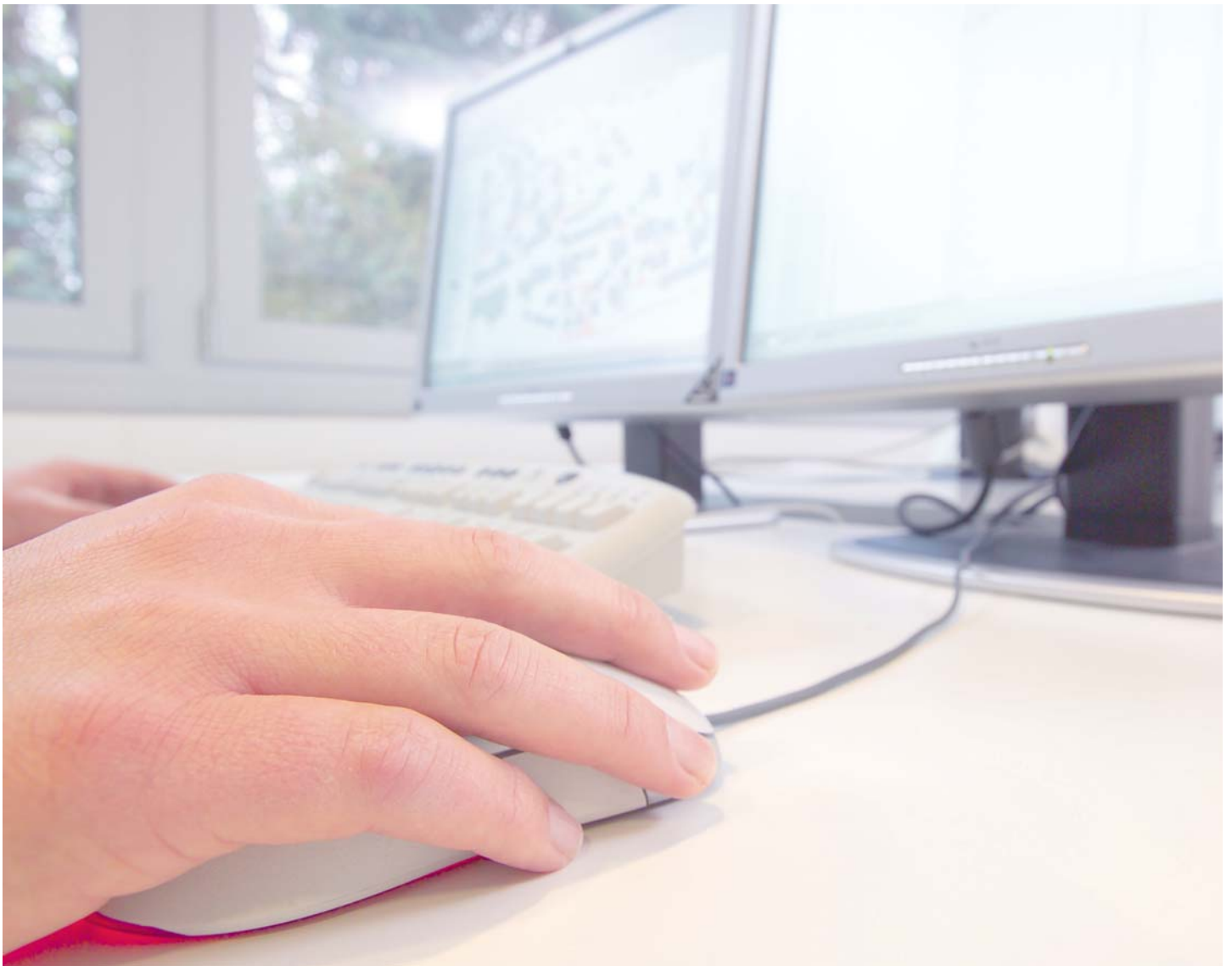


# Data Conversion Services

## Map Data Digitization



Raster to  
Vector  
Conversion

Shifting  
Landbase and  
Network Data

Productivity  
Tools

# Providing GIS Data Excellence



For more than 25 years, the Mettenmeier staff have been executing large volume raster to vector conversion operations, capturing and processing basic geographical and asset data.

The data is captured using standard GIS platforms such as Smallworld GIS, SICAD, Intergraph or ESRI and delivered in whatever format the customer requires.

We satisfy the requirements of our clients in terms of accuracy, completeness, correctness and structure of spatially referenced digital asset data. In this manner, we support public utilities in numerous applications such as planning and design, building and construction, fault management and the maintenance of supply and sewerage networks, as well their accounting systems.

## Data quality and productivity

Based on many years of experience, Mettenmeier develops productivity tools to enhance quality and quantity of our outputs. We also provide these tools to clients on request. Our expertise with the Smallworld GIS system – thanks to our many years of experience and the development of Smallworld NRMs – is a decisive factor for the success of our clients' data conversion projects.

## Highly Skilled Personnel

We deploy qualified, experienced personnel exclusively for our project work (assessment of network logic, dimensioning and cartographic design of map images). Our project managers can look back on over 20 years of experience in data conversion projects. Before work commences, participants are acquainted with the relevant regulations pertaining to the project and its special features. The project competence of the personnel is subject to ongoing monitoring based on the results of their project work. Supplementary training is also provided to ensure the continuous development of our human resources.

## Sub-contractors

Especially when realising large-scale projects, we supplement our core personnel – around 50 in Paderborn, and a further 40 in our Berlin subsidiary – with contractual partners. To swiftly and efficiently realise mass data conversion projects we co-operate with partner companies from around the world. Quality assurance and final acceptance is performed by seasoned Mettenmeier project managers for maximum reliability.

Optimal communication between clients, contractual partners and Mettenmeier is realised via state-of-the-art Citrix connections, allowing all of the involved parties to access the same data model. GIS sessions are used for chat, online meetings and file transfers.

## Data Conversion Services:

- Digital landbase creation
- Vectorization of cables, pipes and other asset data with reference to the ground cadastre map
- Shifting landbase and network data
- Data update/revision
- Data migration
- Data stewardship and exchange
- Data checking and correction
- Technical consultancy on bidding procedures
- Test digitisation (reference data)
- Practical workshops and training

## Network Documentation:

- Gas supply networks
- Water supply networks
- Power supply networks
- Sewer networks
- District heating networks
- Telecommunications networks

**Our data conversion services are certified along the ISO 9001:2000 standard.**

## Mettenmeier GmbH Utility Solutions

Klingenderstr. 10 - 14  
33100 Paderborn, Germany

Tel.: +49 (0)5251 150-300

Fax: +49 (0)5251 150-311

mettenmeier@mettenmeier.de

www.mettenmeier.com