

# Fast Map Loader

## Fast loading of raster maps

### OVERVIEW

#### Benefits

- Fast georeferenced loading of raster maps
- Loading in batch mode
- Comfortable direct access to the loaded raster maps
- Intuitive GUI

#### System requirements

Smallworld GIS, Version 4

Raster maps are an important basis displaying background information in the GIS. Many network operators use both topographic maps and aerial photographs.

With Fast Map Loader raster maps of different formats can be easily loaded to the Smallworld GIS database using a comfortable batch run. Especially the improved performance and user-friendliness distinguish Fast Map Loader from the standard GIS functions.

If raster maps that contain geo-referenced files (world files) or Tiff map sheets are loaded, they will be analysed automatically and placed at the correct geographical position.

Moreover, offset values and a rotation can be predefined in the editor so that the transformation can be executed while loading. The user can also make a load list that defines the order of maps to be loaded.

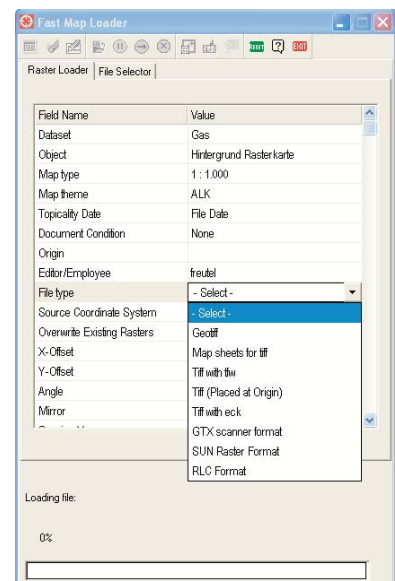


Authorized Partner  
GE Energy

#### Smallworld Solutions by Mettenmeier

As an Authorized Partner of GE Energy, Mettenmeier has been developing Smallworld GIS applications for over 15 years. Every day, thousands of GIS users profit from enhanced functionality and mature solutions delivered by Mettenmeier.

Mettenmeier GmbH Utility Solutions  
Klingenderstr. 10-14  
33100 Paderborn, Germany  
Tel. +49 (0)5251 150-470  
Fax +49 (0)5251 150-499  
mettenmeier@mettenmeier.de  
www.mettenmeier.com



All parameters for the batch import of raster maps are defined in the user-friendly interface.