

GPS Connector

Supports fast navigation in the field

OVERVIEW

Benefits

- Ideal supplement for mobile GIS use
- Fast and simple navigation
- Displays current position in GIS
- Optional map tracking
- Map rotation in GPS direction of movement
- NMEA monitor
- Skyplot

System requirements

Smallworld GIS, Version 4

Smallworld GIS can be used as a mobile application with query and update functions. Its flexible application concept allows the configuration of tailored solution for field staff, e.g. providing an easy user interfaces with fast access to the most important functions.

The GPS Connector is designed to enable fast navigation in the field. The coupling of GIS and GPS receiver enormously facilitates field work. At a press of a button the map moves to the current GPS position which is displayed dynamically by a crosshair in the map. Tedious searches for address or other location data can be done without.

Any GPS receiver can be chosen for this solution, whether integrated in or connected to the mobile computer via cable or standards like Bluetooth. The incoming

position data is transferred from the receiver to a COM port in real-time. With GPS Connector the COM port can be selected and configured. Once this has been done, the GPS connection can be activated and the current position is transmitted to the GIS.

GPS Connector allows not only the jump to the current position, but also dynamic tracing so that the map automatically moves according to the movements of the user, keeping the current position in the centre of the map. Automatic map rotation provides better orientation on the move. The configuration dialogue of GPS Connector displays the positions of the available satellites in a so called Sky Plot and shows the data transfer of the different NMEA strings.

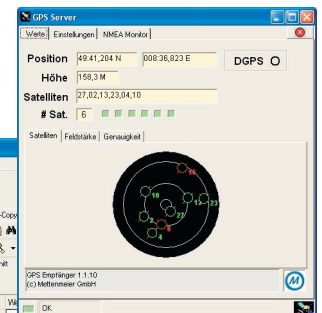
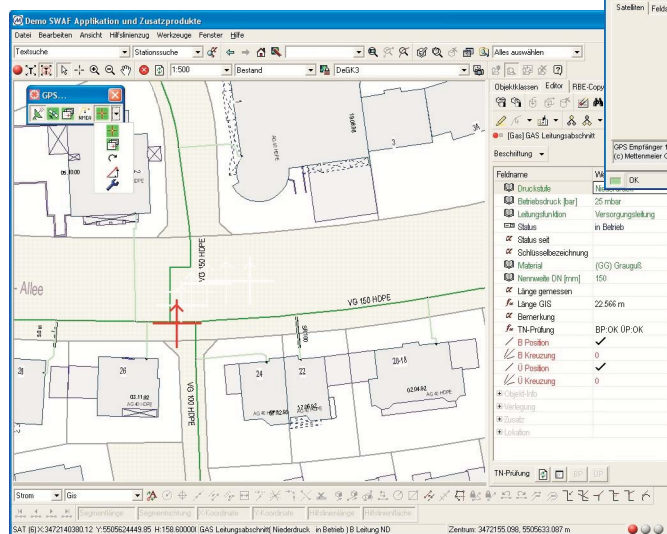


Authorized Partner
GE Energy

Smallworld Solutions by Mettenmeier

As an Authorized Partner of GE Energy, Mettenmeier has been developing Smallworld GIS applications for over 15 years. Every day, thousands of GIS users profit from enhanced functionality and mature solutions delivered by Mettenmeier.

Mettenmeier GmbH Utility Solutions
Klingenderstr. 10-14
33100 Paderborn, Germany
Tel. +49 (0)5251 150-470
Fax +49 (0)5251 150-499
mettenmeier@mettenmeier.de
www.mettenmeier.com



The Sky Plot shows the available satellites.

At a press of a button the current position crosshair is displayed.