

Join Designer

Dynamic Attributes in Smallworld GIS

OVERVIEW

Benefits

- All relevant object attributes at a glance
- Network data information accessible easier and faster
- Comfortable object search via parent object attributes
- Complex, nested queries no longer necessary
- Flexible and user-friendly configuration

System requirements

Smallworld GIS, Version 4 or higher

At a glance, Join Designer displays all the available information of an object in the standard editor because it allows access to the attributes of parent objects that have a relational link to the object, e.g. the number or the registration of a substation are displayed in the details of the power bus bar, which is the child object to the substation. The tedious selection of parent objects belongs to the past.

Join Designer not only displays these attributes in the editor, but also enables Object queries via attributes of the parent objects can easily be carried out directly on the object class using the standard GIS tools.

Join Designer offers a comfortable administration interface to configure the additional attribute fields of an object. Starting with a child object, further objects and attributes can be added for objects that have a relational link to that child object.

One outstanding feature is the possibility to give new external names to the attribute fields so that the common language used for the network objects can be displayed. All existing configurations are clearly represented in the tab "Overview". These configurations are permanently saved and available in the GIS for all users.



Authorized Partner
GE Energy

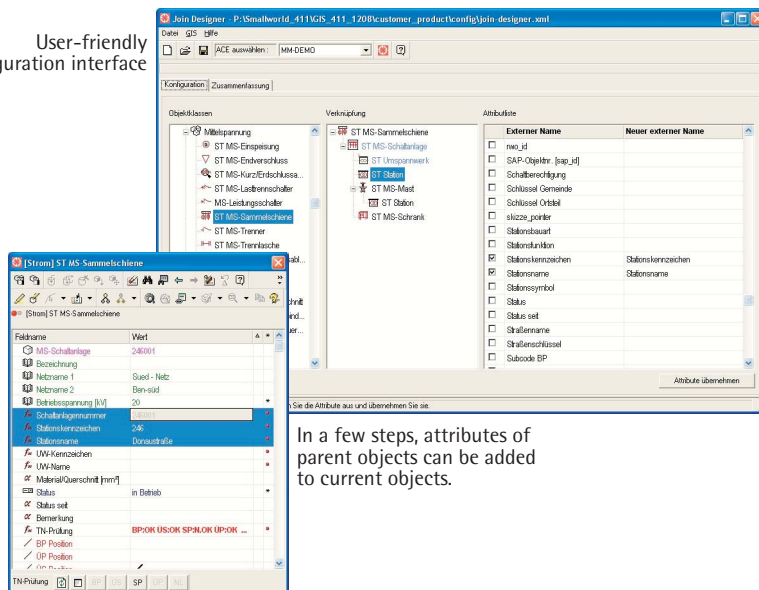
Smallworld Solutions by Mettenmeier

As an Authorized Partner of GE Energy, Mettenmeier has been developing Smallworld GIS applications for over 15 years.

Every day, thousands of GIS users profit from enhanced functionality and mature solutions delivered by Mettenmeier.

Mettenmeier GmbH Utility Solutions
Klingenderstr. 10-14
33100 Paderborn, Germany
Tel. +49 (0)5251 150-470
Fax +49 (0)5251 150-499
mettenmeier@mettenmeier.de
www.mettenmeier.com

User-friendly
configuration interface



In a few steps, attributes of parent objects can be added to current objects.