

SAP/GIS Integration with NRM-EIS Enterprise Integration Services

Easy Integration of Smallworld GIS

Current market analyses have shown that 40–60% of the total IT budget of utility companies is used for systems integration. This is due to permanent re-structuring, market change, new regulations, heterogeneous system environment, stand-alone processes and a high number of interfaces, which form a significant source of error.

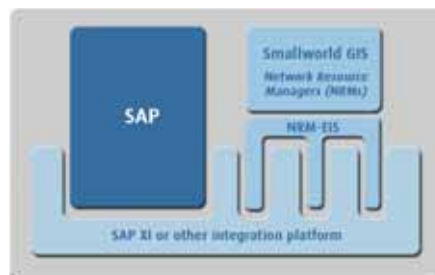
SAP and GIS form the most important building blocks of most utility companies. The requirements of system integration can best be met through a service-oriented IT approach. Mettenmeier's NRM EIS conform to this philosophy. Smallworld's standard GIS software suites for the utilities industries (NRM) are easily and flexibly exploited in conjunction with modern system integration platforms such as SAP XI, IBM WebSphere or Microsoft BizTalk, as well as the SAP Business Connector. These EAI tools enable complex and diverse IT systems to be simplified and standardised. Other systems can be readily connected.

"There is no alternative to SOA and web services as a basis for future software. The issues revolve around the rate of adoption and the purposes for which it is applied."
Simon Hayward, "Positions 2005: Service-Oriented Architecture Adds Flexibility to Business Processes," Gartner Inc., Feb. 2005

NRM-EIS opens up the Smallworld GIS to the harmonisation of information and business processes across technical and organisational boundaries (matching of data, provision of maps for assets or tasks, processing of network information etc.). It allows flexible XML import and export for other applications and easy GIS data update

Information:

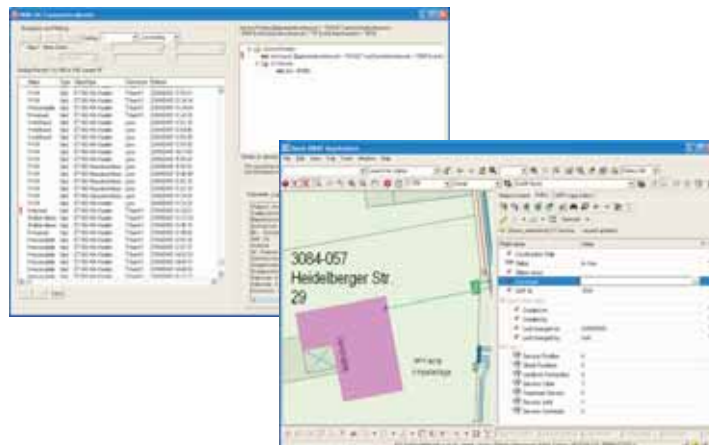
Thomas Borscha, Ludger Ebbers
Mettenmeier GmbH
thomas.borscha@mettenmeier.de
ludger.ebbers@mettenmeier.de



using web service clients, e.g. Microsoft Infopath. XML/SOAP web services form the basis for this and lead to a significant reduction in total costs of ownership by minimising individual development costs and by using the full EAI functionality.

Important features of NRM-EIS

- Multi-layer systems architecture as a common basis for many applications (J2EE)
- Compatible with the SIAS 4.1 architecture
- Scalable for the needs of both large and small organisations



The NRM-EIS Transaction Monitor allows navigation, identification and gives information about the current transaction status

SAP® Certified Integration

Mettenmeier is SAP partner in the category "Software Vendor with certified integration". Their NRM-EIS has been certified for the integration of Smallworld GIS with SAP NetWeaver (Exchange Infrastructure Content, Exchange Infrastructure 3rd party adapter).

- Facilitates the initial matching of data and the modification of mass data
- Communication interface based on web services for reading and writing GIS data including relational and topographical structures and special services for network tracing
- Transaction Monitor with navigation and transaction status etc.

Brilliant implementation plan

A modular implementation plan stretches from the simple front end connection, through data integration and synchronisation of business assets or "objects", to networking of the most important business processes such as maintenance and fault management. The introduction of modern integrated platforms in conjunction with NRM-EIS enables the rapid and economical integration of SAP and GIS.