

VRDB Variant Database Planning Tool

OVERVIEW

Benefits

- Comfortable network planning from directly within Smallworld GIS
- All planning variants in a single (!) Smallworld option
- Practically no restriction of the number of variants and drafts
- Common and simple data acquisition tools and interfaces
- Output of statistics on planned objects

System requirements

Smallworld GIS, Version 4

Managing hundreds or even thousands of your own designs, each in a different status of their life cycle is a critical job. Integrating the designs of your sub contractors stretches the level of IT complexity to its limits. Storing all information in one database helps you to view, overlay, maintain and realize your projects transparently.

VRDB allows an unlimited number of users to have numerous plans/designs. Each plan has its own life-cycle. External plans may be integrated transparently. All within an easily maintainable environment, because changes in the data structure of your Smallworld environment do not require data model changes in VRDB.

All designs are stored as independent entities in one version of Smallworld's long transaction database or in a non-version-managed database. This enables the user to have a quick overview of ALL planned projects and their status, hence enabling him to analyze technical and/or financial aspects. The responsible manager can easily filter out those projects that need his attention, enabling him to take immediate action if necessary.

Features

- There is practically no limit on number of designs/plans and their scenario's.
- The variants look and feel like Smallworld versions, no unnecessary copies of objects are being made while creating subvariants.
- Flexible manipulation of version branches like moving or copying them to other positions in the version tree structure.
- No action required when the data model of the production system changes.
- A fully integrated authorization system will help avoid unauthorized use and decreases the number of entities in the list of visible variants.
- Easy integration of data from other data sources.
- Easy data capturing facilities and their GUI's.
- The integrated Broadcast System will improve communication between the different responsible parties if e. g. the project's milestones are changing, or are not met.

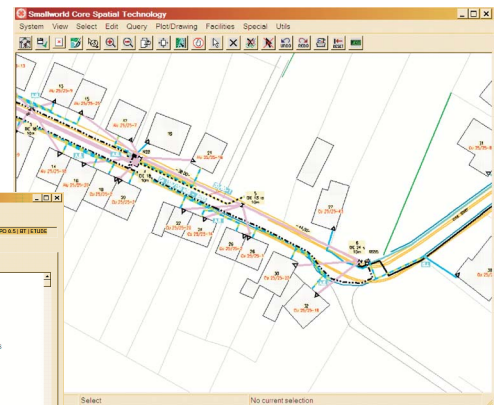


Authorized Partner
GE Energy

Smallworld Solutions by Mettenmeier

As an Authorized Partner of GE Energy, Mettenmeier has been developing Smallworld GIS applications for over 15 years. Every day, thousands of GIS users profit from enhanced functionality and mature solutions delivered by Mettenmeier.

Mettenmeier GmbH Utility Solutions
Klingenderstr. 10-14
33100 Paderborn, Germany
Tel. +49 (0)5251 150-470
Fax +49 (0)5251 150-499
mettenmeier@mettenmeier.de
www.mettenmeier.com



All designs in one database